



Gift Catalogue

Our Goal

Rails to Trails of Northwest Montana is a citizen's organization comprised of active, concerned Montanans. We are committed to converting abandoned railroad beds in Northwest Montana to non-motorized, year round recreational trails that offer a safe, enjoyable alternative to using busy highways. These trails provide residents and visitors with the opportunity to hike, bike, ride, jog, cross-country ski or snowshoe along this beautiful and historic trail.

The Great Northern Historic Trail

Early settlement of the Upper Flathead Valley was closely tied to the arrival of the railroad. The Great Northern Railway Company offered frequent freight and passenger service trains through Marion until 1904, when railroad officials decided to move the main line to its current route through Whitefish. The "Smith Valley Line" continued to operate until the 1950's as a spur line that connected Marion with steamboats on Flathead Lake and with the transcontinental railroad route stretching from St. Paul, Minnesota to Seattle, Washington. These abandoned railroad beds can once again be an important network linking outlying communities to schools and town while also promoting the education, safety, health and well-being of all our citizens.

Sharing With Your Community

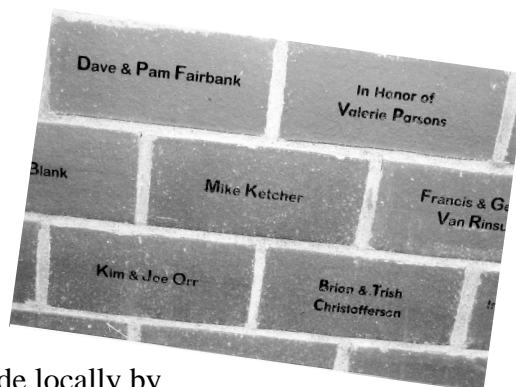
This catalogue was developed in the spirit of sharing. It gives everyone an opportunity for personal involvement. Your interest in Rails to Trails will help us increase the safety of the trail and efficiency of construction. Through the purchase of a gift or by making a donation, you are making an investment and helping to build a strong, happy and healthy community.

Your Gift is Tax Deductible

Every gift you share is tax deductible. Please look over the catalogue and join together with your friends, family or co-workers to contribute to this worthy cause. Just as the trail will be used by everyone, we welcome gifts from the community, businesses, organizations and individuals from all walks of life. We also honor requests for anonymous donations. If you have any questions, please contact us. We would love to hear from you.

1. Gift Bricks

Put your name on the trail with bricks that will be displayed on walls at the trail entries. Bricks would be limited to names only and 20 character and 2 lines - includes spaces.



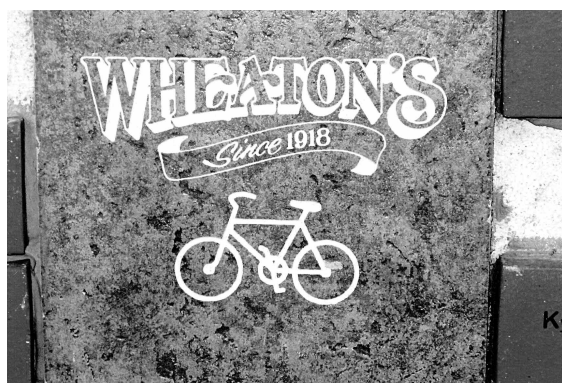
2. Bird Houses

These beautifully handcrafted birdhouses were made locally by a senior craftsman who was a native Montanan. Don Green created replicas from an earlier era in Montana with two styles-log cabins and tar paper shacks.



3. Milepost Markers

The milepost markers are handsomely crafted from high quality wood. Your giving will be recognized by an engraved plate with the name of your choosing.



4. Logo Tablets

Personal and company logos can be inscribed into these large architectural paving tiles. This permanent type of advertisement is extremely cost effective when compared to other advertising media, which has a very short life span. Please attach camera-ready art with your order form if available.

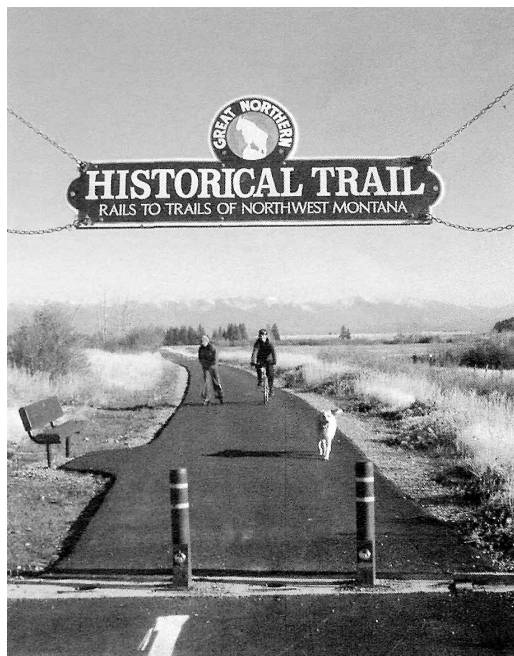
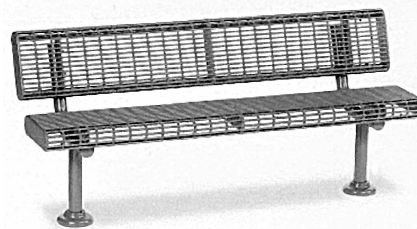


5. A Living Tree

Choose a tree as your gift to the trail. Your tree along the trail will be identified with an engraved plate on a post with your designated inscription.

6. Trail Bench

A bench will be appreciated by many and noticed by all. To recognize your generosity, a plate with your inscription will be affixed to the bench.



7. Trail Entry Signs

Each trail head location is marked with a large Great Northern Historical Trail sign. Your gift makes these signs possible. A name plate will be engraved with the inscription of your choice and prominently placed on the sign's large log uprights.



8. Mark Ogle Print

Enhance your home and help sponsor our trails at the same time. Local artist, Mark Ogle, is offering a limited edition of his 16x24 print "Loon Lake".

Gift Catalogue Order Form

Name _____

Organization _____

Mailing Address _____

City _____ State _____ Zip _____

Day Phone _____ Email _____

Please Specify Engraving (Up to 20 characters on 2 lines) _____

☐ Yes, I want to be a Friend of the Trails. Please add me to the list and keep me informed.



Rails to Trails of N.W. Montana
PO Box 1103
Kalispell, MT 59903-1103

U.S. Postage
PAID
Permit #162
Kalispell, MT
59901

Address Correction Requested
Please Return Label

Gift Item	Donation	Quantity
Gift Bricks	\$ 75.00	
Mark Ogle Print "Loon Lake"	\$ 150.00	
Bird House	\$ 250.00	
Milepost Marker	\$ 350.00	
Logo Tablet	\$ 500.00	
A Living Tree	\$ 1,000.00	
Trail Bench	\$ 1,500.00	
Trail Entry Sign	\$ 2,500.00	
Good Will Offering	Any Amount	
TOTAL		

Please make check or money order payable to and send order form to:

Rails to Trails of N.W. Montana
PO Box 1103 • Kalispell, MT 59903-1103